



ENTRE/MATIC



DYNACO D-651 ALL WEATHER HIGH PERFORMANCE DOOR

www.dynacodoor.us

Push-Pull
gear driven technology



outside door

DYNACO D-651 ALL WEATHER HIGH PERFORMANCE DOOR

The DYNACO D-651 All Weather is specifically designed for medium sized outside applications with intensive use and subjected to extreme wind loads. It protects your facilities against wind, rain, snow, dirt and extreme temperatures.

Operating speed and perfect sealing improve your traffic flows and provide employee comfort, environmental control and savings on energy costs. Fully self-reinserting, the DYNACO D-651 All Weather will automatically reinsert itself in its side guides when the curtain is accidentally hit. Special features for easy installation and maintenance reduce the cost of ownership, while the small footprint allows maximum use of the available space.

The special design of the driving system and reintroduction block reduce operating noise, creating a quieter environment.

■ ULTRA HIGH SPEED OPERATION

Up to 142 in/s depending on the size Closing speed 48 in/s

■ PATENTED “PUSH PULL” TECHNOLOGY

Gear driven Push-Pull system positively drives the curtain both directions, eliminating maintenance and damage prone tension systems, wind stiffeners and bottom bars.

■ SUPERIOR SEAL, WIND RESISTANT

Patented side frame assembly with inner guide eliminates the need for weather seals or brush systems. Up to wind load class 5 (41.77 lbs/sqft., or 128 mph).

■ CRASH FORGIVING AND SELF-REINSERTING WITHOUT INTERVENTION

The curtain automatically reinserts itself when dislodged. No manual intervention, or production down time.

■ SAFETY ENGINEERED

Each door panel comes standard with a unique soft curtain, which prevents many hard edge accidents. No stiffeners or rigid bottom bars to injure workers or damage equipment. A wireless reversing edge and built-in infrared sensors protect against 4 different types of accidents.

■ ADVANCED DRIVE

Frequency driven motor and encoder for smooth operation. Wearable elements are reduced to a minimum.

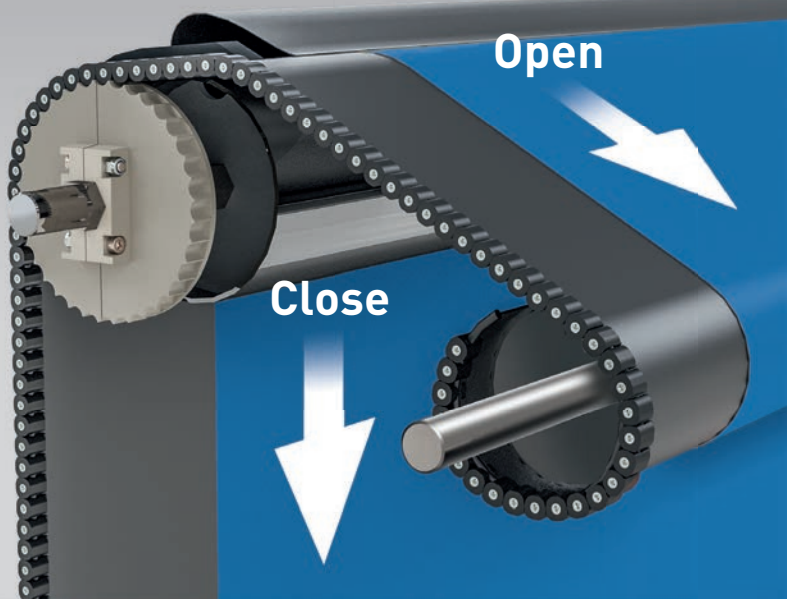
■ DYNALOGIX 5 CONTROL BOX

User-friendly control box with touchscreen interface assists users, installers and service technicians.

Movable panels for easy maintenance



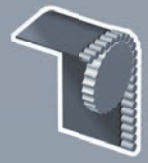
“PUSH-PULL^{PT}” Drive Technology



Push-Pull

gear driven technology

outside door



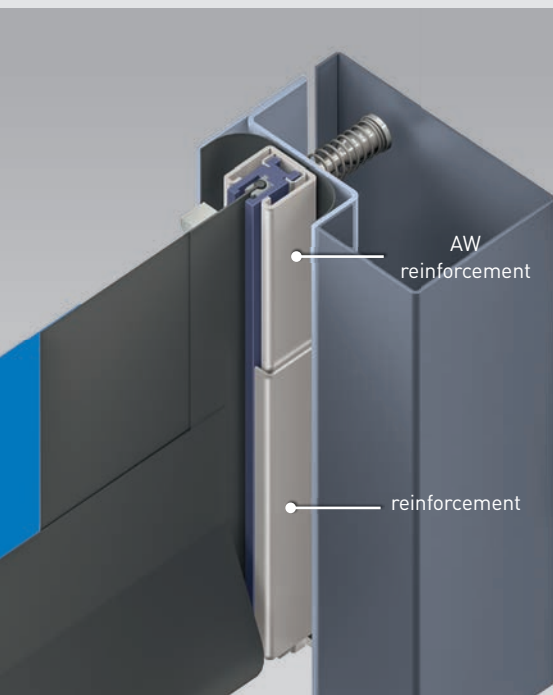
TECHNICAL SPECIFICATIONS

Door Dimensions	Min. W 3ft x H 4ft Max. W 18ft x H 18ft
Operating Speed (depending on door size)	Up to 142in/s open 48in/s closing
Safety Features	Soft bottom edge design. Wireless reversing edge and built-in infrared sensor. No coil cords.
Structure	Galvanized steel: 3.9"x1.57"x0.118" Option: Stainless steel
Door Panel	Reinforced PVC (27 oz/sq.yd). Available in different colors and provided with side sealing zippers.
Drum	Steel 1drum Ø 5-1/2"x0.118" + 1drum Ø 4-1/100"x2/25"

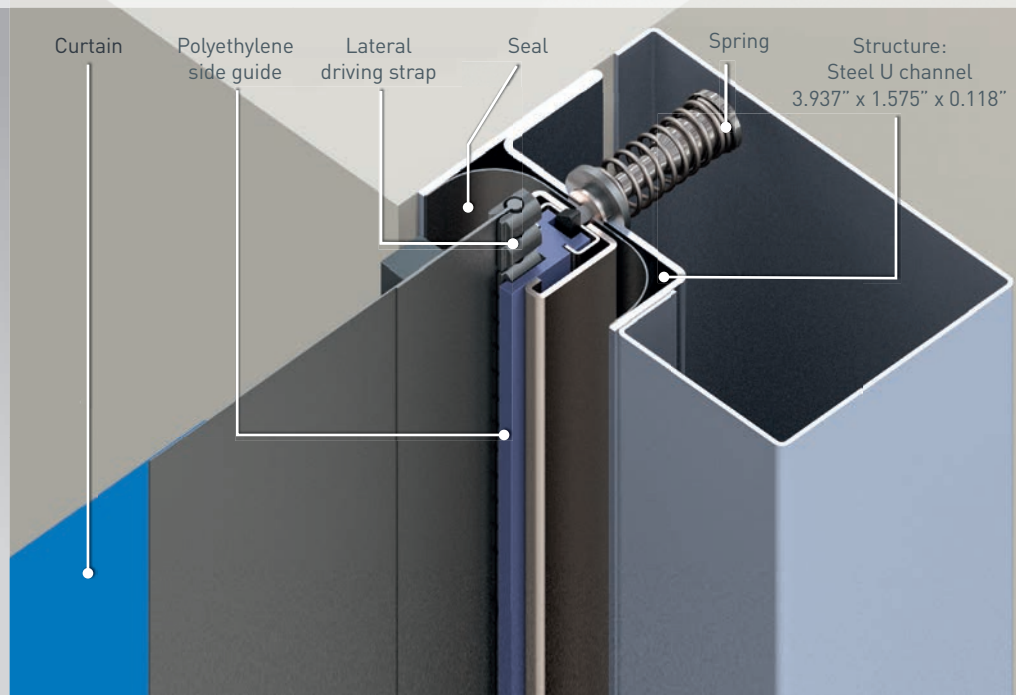
TECHNICAL SPECIFICATIONS

Side Guides	Reinforced polyethylene (PE-UHMW1000), with springs. Side guides reinforced over the total height.
Motor	4 poles, without brake. Power: 1.5kW. IP rating: IP65.
Control Box	DYNALOGIX 5 provided with: Circuit breaker, general divider, adjustable timer, push button for opening and reset, emergency stop. IP rating: IP54, frequency inverter.
Standard Detectors	Infrared barrier: 12in. from the floor. Wireless DYNACO detector (WDD)
Power Supply Frequency	Single phase 230V – 18A Frequency: 50-60Hz
Temperature range	5F up to 122F (not for Freezer applications)

Side reinforcement



Side guide and lateral driving belt

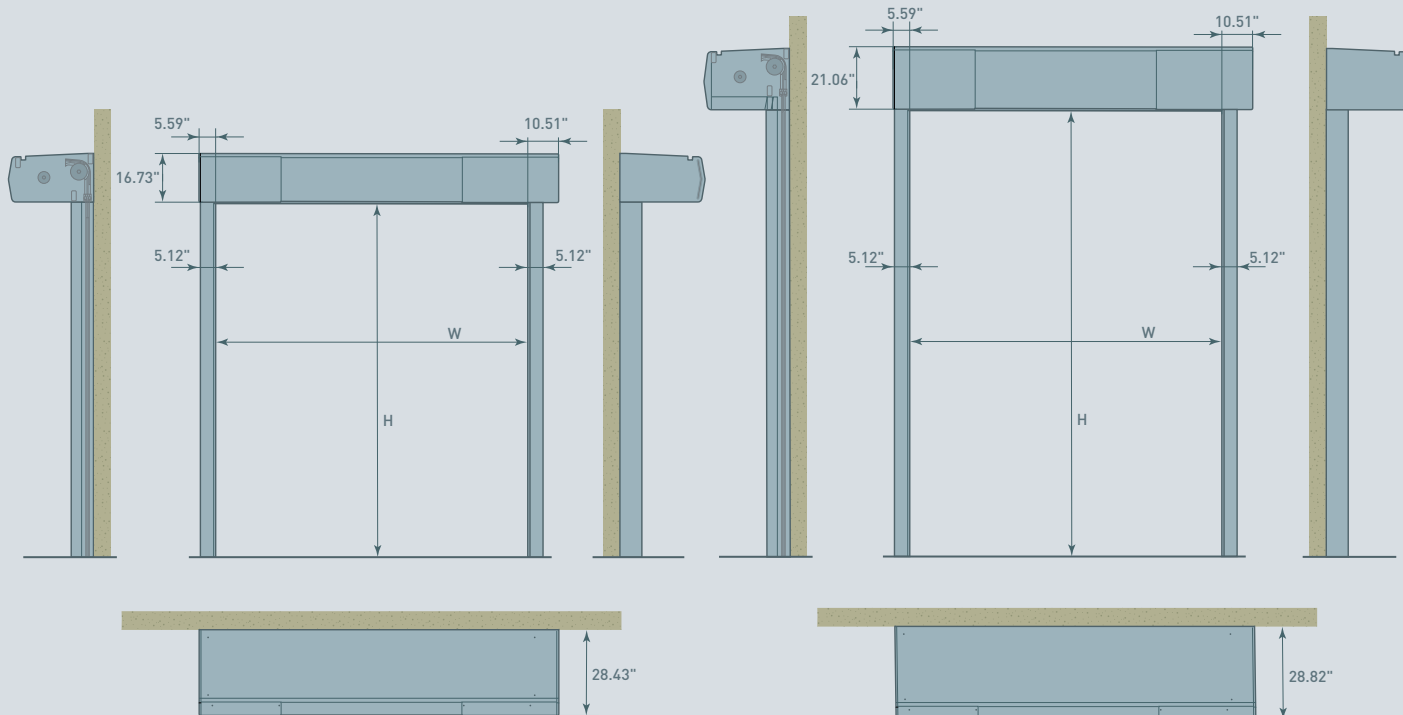


Dimensions and installation requirements

DYNACO D-651 All Weather High Performance Door

$H \leq 15'$

$H > 15'$



All indicated dimensions are net: the space necessary for mounting and maintenance has to be provided.

REMARK: based on the risk analysis of the environment, extra push buttons, detectors and covers might be required.

Entrematic offers a comprehensive range of products for industrial, commercial, institutional and residential applications, including sectional doors, loading dock equipment, high-performance doors, residential garage doors, pedestrian door automation and openers. Built on nearly 200 years of accumulated expertise, Entrematic is the preferred partner of distributors and the number one choice of end user customers, providing innovative products, technical expertise and a portfolio of industry-leading brands including Amarr, Kelley, Serco, Dynaco and Ditec. Entrematic, Amarr, Kelly, Serco, Normstahl, Dynaco, Ditec and EM, as words and logotypes, are examples of trademarks owned by Entrematic Group AB or companies within the Entrematic Group.

© Entrematic Group AB, 2019

The Dynaco products are protected by worldwide registered patents. As part of its policy of continuous product development, Entrematic reserves the right to change the characteristics of its products or components without prior notice.

Disclaimers: For a correct use of our products, please refer to our manual.

Everything that is mentioned in this brochure is only valid under the terms of use in the user manual and on condition that the door was properly installed and maintained and has not undergone abuse nor neglect.

ENTREMATICA USA

935 Campus Drive Mundelein IL 60060

P: 1-800-459-1930

P: 1-847-562-4910

F: 1-800-459-1960

Email: info@dynacodoor.us

www.dynacodoor.us

ENTREMATICA